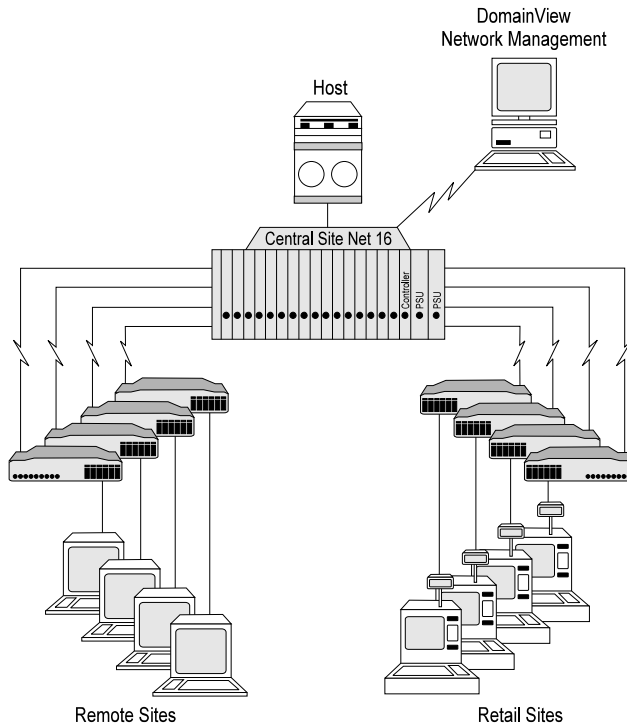


Network 16 Managed Modem Racking System



Network 16 Card Frame

- Allows up to 16 modem, ISDN and/or line driver cards to be centrally racked
- 4U high, industry standard 19" card frame
- Optional redundant power supply
- Range of AC and DC power supply versions available
- Multiple Network 16's can be linked together for highly concentrated sites

Controller Card

- Optional Controller Card for SNMP management
- SNMP management via X.25, Async (SLIP) and LAN (via terminal server), ensuring compatibility with higher order management systems
- Async and Sync. X.25 management connectivity
- Remote logon using UDP over IP
- Head Controller and Head Printer facility providing shared printer and operator interface
- Reconfiguration of any network device, local or remote
- Monitoring the status of local or remote devices
- Alarm and event filtering
- Initiation of tests and diagnostics
- Simple, single overview screen supported by comprehensive status and configuration screens
- 2 level password protection
- Time of day and day of week security access for managed devices
- Dial-in security management
- Hard copy print out of events or alarms

General Description

The Network 16 racking system allows the most complex modem to be easily controlled and managed, as well as providing a simple growth path as the network expands. In its simplest form the Network 16 provides a card frame for racking modems, saving space and giving greater control than having clusters of desktop units at a central site. Simply adding the Network 16 controller card, turns the rack into an intelligent management system for large networks and the addition of an SNMP management system, such as Case Technology's DomainView, allows full, graphical management to the most remote rack anywhere on the network. Adding dual power supplies for resilience makes the Network 16 a highly robust and secure option for the most demanding enterprise networks.

Network 16 Card Frame

Network 16 is a 4U high standard 19" rack mount card frame that can house up to 16 modem, line driver, or ISDN terminal adapter cards in any mix. It is available with optional dual redundant power supply for resilience and load sharing* and an optional controller card which provides sophisticated management, including SNMP support for integration of the rack into enterprise network management systems.

*Load sharing may not be available with certain equipment configurations.

Controller Card

The Controller card transforms the Network 16 from a straight forward card frame into an intelligent, fully managed system. Its design allows any mix of PSTN, leased line devices to be managed from an SNMP compliant management station, such as Case Technology's DomainView, or a VT100 terminal. The Controller card is a single printed circuit assembly that fits into its own slot (17) of a Network 16 rack.

Configuration

Modem configurations can be stored in the Controller card and associated with particular channels. Auto-download of this configuration to the channel allows card swaps without the need for manual re-configuration. The card's non-volatile memory holds the configuration details of the 16 local devices, the remote devices they are connected to, and its own configuration which determines the management task you want it to perform.

Event Handling

The Controller card will filter, store and display events you have defined as alarms in the three optional categories. It will store and display the latest 150 events which you have classified as alarm events, and the latest 250 events you have classified as monitored events. Unmonitored events are filtered out. Events can be sent to a printer for hard copy purposes. Using the Head Printer option events from a network of Network 16s can be consolidated to the Head Printer which provides a single report output. Alarm calls can, optionally, be placed across either an X.25 network or via a modem or ISDN TA to a remote site. Using the Head Printer option still leave the option of having printer outputs on the local Controller cards.

Security

Time of Day access control can also be provided which is used in conjunction with our level 2 modem security feature.

Network Management

The management interface on the Network 16 controller card enables Network 16 to be integrated and managed by higher order Enterprise management systems, such as Case Technology's DomainView. This means that the racks (even down to individual modems or terminal adapters) can be brought under control of the same management system as other products on the network - routers, hubs, LANs, etc. The Network Management System gains full access to manage the cards in the rack, whether remote, including configuration, line usage, monitoring and fault reporting, all displayed within a highly visual series of screens.

Connection between the Network 16 controller card and the network management system is highly flexible, including support for direct connection as well as leased-line and dial-up modem links. SNMP management information can also be carried over asynchronous links using X.25.

Technical Specifications

Network 16 Chassis

Capacity	16 modem, linedriver, or ISDN TAs, One Controller Card, up to 2 power supply modules
Lines	PSTN, Leased Line point to point, Multidrop, dial backup, ISDN BR
Line Termination	8 connectors per slot for 2 or 4 wire leased line. Up to 2 presentations per slot
DCE Termination	One 25 way socket per slot
Loading Method	Live front loading, no direct cable connecting to cards
Busy Out	Automatic 33kohm Busy (UK only) Out on PSTN line 1
External Alarm	One relay for each PSU
Dimensions and Weight	342 x 482 x 177mm (4U) 6.1Kg (Rack plus one PSU)

Network 16 Power Supply

Voltage	230 volts, 50 to 60Hz DC 24 and 48 volt DC options available
Consumption	200W (single power unit fully loaded rack)
Connection	Detachable IEC power cord, one for each supply
Environment	Temp: +5° to +40°C operating, -25° to +50°C storage, Humidity: 5% to 95% (non-condensing)
Dimensions and Weight	310 x 177 x 40mm 2.75kg

Controller Card

Internal Connection	64 way connector, plugs into Network 16 card frame
Control Ports	3 ports, 25-way "D" type sockets, Port 1 Async, Port 2: Sync or Async, Supervisory Port: Async
Async Format	Speed: 300, 600, 1200, 4800, 9600, Data Bits: 7 or 8, Parity: Even or Odd. Stop Bits: 1 or 2, Autobaud: 7 data, even parity, 1 stop
Async Protocol	ANSI or VT100 terminals, Mayze Application Protocol (MAP) Mayze Link Protocol (MLP), ASCII serial printer, AT Compatible modem
Sync Operation	Int. or Ext. clock X.25 level 3
Non-Volatile Storage	Network 16 configuration, Individual storage of both local and remote device configurations, 400 time stamped events or alarms, Inventory status per channel
Indicators	9 Light Emitting Diodes
Alarm Relay	Triggered by alarm event
Environment	Temp: 0° to 40°C operating, -25° to +55°C storage Humidity: 5% to 95% (non-condensing)
Dimensions and Weight	310 x 177 x 20mm 0.5kg